

## Technical data

### Peripheral stent

- Polymer-free drug release device
- Stent material: L605 Cobalt Chromium alloy
- Abluminal Reservoir Technology - Sustained elution up to 2-3 months
- Strut surface coating: Bio Inducer Surface - BIS
- Strut thickness: 70 - 80µm
- 2 radiopaque platinum markers at stent ends
- No stent foreshortening during expansion

### Drug releasing formulation

- Amphilimus™ formulation: Sirolimus + Fatty Acid

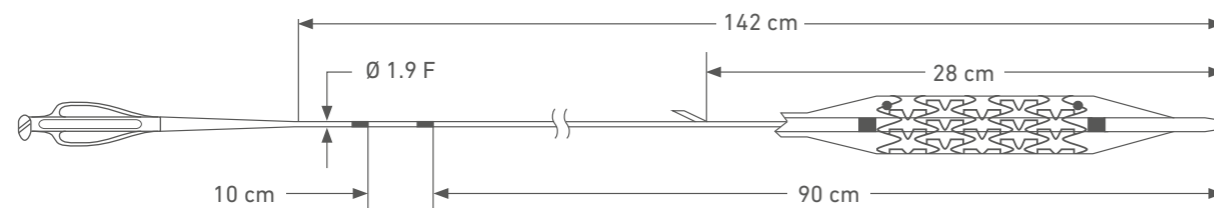
### Device specifications

- Rapid exchange
- Introducer sheath compatibility: 4F
- Guidewire compatibility: 0.014"
- Nominal Pressure (NP): 9 ATM
- Rated Burst Pressure (RBP): 18 ATM
- Average Burst Pressure (ABP): 24 ATM

### Ordering Information

∅ (mm) \ L (mm)	8	12	16	20	25	31	38	46*
2,25	ICLK22508	ICLK22512	ICLK22516	ICLK22520	ICLK22525	ICLK22531		
2,50	ICLK2508	ICLK2512	ICLK2516	ICLK2520	ICLK2525	ICLK2531	ICLK2538	ICLK2546
2,75	ICLK27508	ICLK27512	ICLK27516	ICLK27520	ICLK27525	ICLK27531	ICLK27538	ICLK27546
3,00	ICLK3008	ICLK3012	ICLK3016	ICLK3020	ICLK3025	ICLK3031	ICLK3038	ICLK3046
3,50	ICLK3508	ICLK3512	ICLK3516	ICLK3520	ICLK3525	ICLK3531	ICLK3538	ICLK3546
4,00	ICLK4008	ICLK4012	ICLK4016	ICLK4020	ICLK4025	ICLK4031	ICLK4038	
4,50		ICLK4512	ICLK4516	ICLK4520	ICLK4525	ICLK4531		

\* Please contact your local sales representative for product availability



### Cre8™ BTK

Manufactured by CID S.p.A.  
Strada per Crescentino, sn  
13040 Saluggia (VC), Italy  
CID S.p.A. member of Alvimedica Group

[www.alvimedica.com](http://www.alvimedica.com)

This product is CE marked.

Please consult product labels and package inserts for indications, contraindications, hazards, warnings, cautions and instruction for use.

©2021, Alvimedica. All Rights Reserved.

2021/02 IC07015643/5

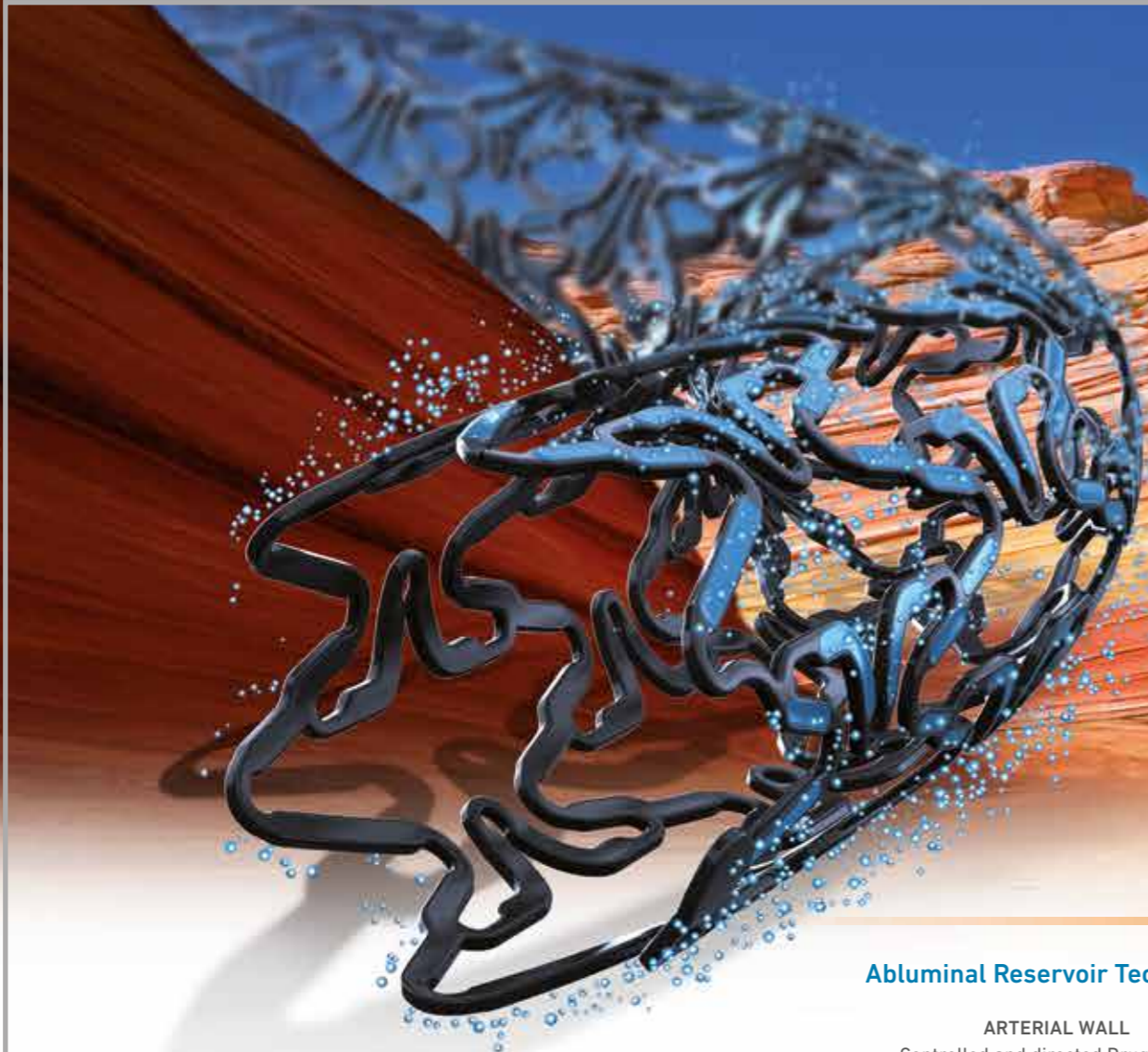


AMPHILIMUS™ (SIROLIMUS + FATTY ACID)  
ELUTING PERIPHERAL STENT

## OPENING NEW FRONTIERS OF FREEDOM

abluminal  
reservoir  
technology

 **Alvimedica**



## Polymer-free DES

Alvimedica's exclusive technology eliminates the renowned drawbacks associated with polymers.



### UNIQUE FEATURES

#### Abluminal Reservoir Technology

**ARTERIAL WALL**  
Controlled and directed Drug elution



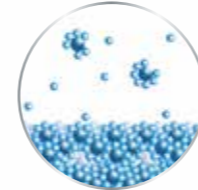
**BLOOD FLOW**  
Lack of any polymer and any drug

Proprietary polymer-free drug release system (Abluminal Reservoir Technology) constituted of reservoirs on the stent's outer surface.

The drug efficacy is maximized by the prolonged, controlled and targeted elution to the vessel wall. The endothelialization process is not delayed by the presence of any polymer or drug.

#### Amphilimus™ formulation: Sirolimus + Fatty Acid

**FATTY ACID IMPROVES SIROLIMUS DISTRIBUTION INSIDE THE VESSEL WALL**

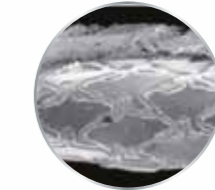


Cre8™ BTK employs a permeation enhancer (Fatty Acid) in its formulation which allows an homogeneous distribution on the whole tissue.

In diabetic cells, as glucose uptake and oxidation are impaired, the uptake of fatty acids is increased in the ATP pathway which also improves the availability of the Sirolimus.

#### Bio-Inducer Surface coating

**FAST ENDOTHELIALIZATION**



Since the day of the implantation, the Bio Inducer Surface (an ultra-thin film made of pure carbon) is the only interface versus the blood flow. Thanks to its high bio and hemocompatibility it promotes fast healing and acts as an anti-thrombotic coating.

In the very distal arteries, where the blood speed is slow and the platelet interaction with the stent surface is prolonged, the coating contributes to increase device safety.

### BENEFITS

