

## Technical data

### Coronary stent

- Polymer-free drug release device
- Stent material: L605 Cobalt Chromium alloy
- Abluminal Reservoir Technology - Sustained elution up to 2-3 months
- Strut surface coating: Bio Inducer Surface - BIS
- Strut thickness: 70 - 80µm
- 2 radiopaque platinum markers at stent ends
- No stent foreshortening during expansion

### Drug releasing formulation

- Amphilimus™ formulation: Sirolimus + Fatty Acid

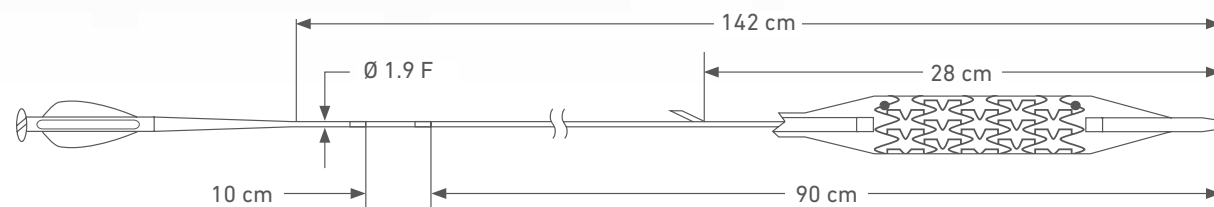
### Device specifications

- Guiding catheter compatibility: 5F (0.058")
- Guidewire compatibility: 0.014"
- Nominal Pressure (NP): 9 ATM
- Rated Burst Pressure (RBP): 18 ATM
- Average Burst Pressure (ABP): 24 ATM

### Ordering Information

∅ (mm) \ L (mm)	8	12	16	20	25	31	38	46*
2,25	ICLI22508	ICLI22512	ICLI22516	ICLI22520	ICLI22525	ICLI22531		
2,50	ICLI2508	ICLI2512	ICLI2516	ICLI2520	ICLI2525	ICLI2531	ICLI2538	ICLI2546
2,75	ICLI27508	ICLI27512	ICLI27516	ICLI27520	ICLI27525	ICLI27531	ICLI27538	ICLI27546
3,00	ICLI3008	ICLI3012	ICLI3016	ICLI3020	ICLI3025	ICLI3031	ICLI3038	ICLI3046
3,50	ICLI3508	ICLI3512	ICLI3516	ICLI3520	ICLI3525	ICLI3531	ICLI3538	ICLI3546
4,00	ICLI4008	ICLI4012	ICLI4016	ICLI4020	ICLI4025	ICLI4031	ICLI4038	
4,50		ICLI4512	ICLI4516	ICLI4520	ICLI4525	ICLI4531		

\* Please contact your local sales representative for product availability



### Cre8™

Manufactured by CID S.p.A.  
Strada per Crescentino, sn  
13040 Saluggia (VC), Italy  
CID S.p.A. member of Alvimedica Group

[www.alvimedica.com](http://www.alvimedica.com)

©2021, Alvimedica. All Rights Reserved.

This product is CE marked.  
Please consult product labels and package inserts for indications, contraindications, hazards, warnings, cautions and instruction for use.



2021/02 IC0701555080/5



AMPHILIMUS™ (SIROLIMUS+FATTY ACID)  
ELUTING CORONARY STENT

**EFFICACY FREE FROM LIMITS**



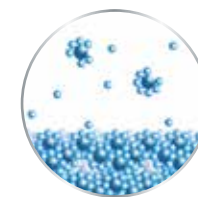


## Polymer-free Platform

Alvimedica's exclusive technology eliminates the renowned drawbacks associated to polymers.



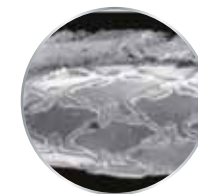
**Abluminal Reservoir Technology**  
CONTROLLED AND TARGETED ELUTION



**Amphilimus™ formulation: Sirolimus + Fatty Acid**



MAXIMIZED EFFICACY



**Bio Inducer Surface coating**



OPTIMAL HEMOCOMPATIBILITY  
VS LUMEN BLOOD FLOW