

## Technical data

### Coronary stent

- Polymer-free drug release device
- Stent material: L605 Cobalt Chromium alloy
- Abluminal reservoirs
- Strut surface coating: Bio Inducer Surface - BIS
- Strut thickness: 70 - 80µm
- 2 radiopaque platinum markers at stent ends
- No stent foreshortening during expansion

### Device specifications

- Guiding catheter compatibility: 5F (0.058")
- Guidewire compatibility: 0.014"
- Nominal Pressure (NP): 9 ATM
- Rated Burst Pressure (RBP): 18 ATM
- Average Burst Pressure (ABP): 24 ATM

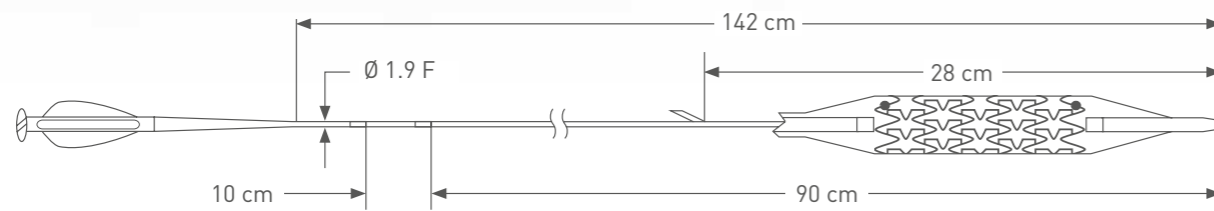
### Drug releasing formulation

- Amphilimus™ formulation: Sirolimus + Fatty Acid

### Ordering Information

∅ (mm) \ L (mm)	8	12	16	20	25	31	38	46*
2,25	ICLI22508	ICLI22512	ICLI22516	ICLI22520	ICLI22525	ICLI22531		
2,50	ICLI2508	ICLI2512	ICLI2516	ICLI2520	ICLI2525	ICLI2531	ICLI2538	ICLI2546
2,75	ICLI27508	ICLI27512	ICLI27516	ICLI27520	ICLI27525	ICLI27531	ICLI27538	ICLI27546
3,00	ICLI3008	ICLI3012	ICLI3016	ICLI3020	ICLI3025	ICLI3031	ICLI3038	ICLI3046
3,50	ICLI3508	ICLI3512	ICLI3516	ICLI3520	ICLI3525	ICLI3531	ICLI3538	ICLI3546
4,00	ICLI4008	ICLI4012	ICLI4016	ICLI4020	ICLI4025	ICLI4031	ICLI4038	
4,50		ICLI4512	ICLI4516	ICLI4520	ICLI4525	ICLI4531		

\* Please contact your local sales representative for product availability



Cre8™

Manufactured by CID S.p.A.  
Strada per Crescentino,sn  
13040 Saluggia (VC), Italy  
CID spa member of Alvimedica Group

[www.alvimedica.com](http://www.alvimedica.com)

©2018, Alvimedica. All Rights Reserved.

This product is CE marked.  
Currently not available in US and Japan.  
Please consult product labels and package  
inserts for indications, contraindications, hazards,  
warnings, cautions and instruction for use.

 Alvimedica

2018/12 IC0701555080/4



AMPHILIMUS™ (SIROLIMUS+FATTY ACID)  
ELUTING CORONARY STENT

**EFFICACY FREE FROM LIMITS**

 Alvimedica

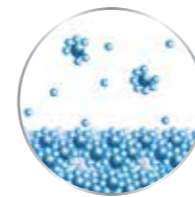


## Polymer-free Platform

Alvimedica's exclusive technology eliminates the renowned drawbacks associated to polymers.



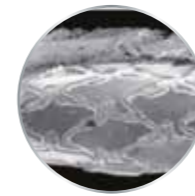
Abluminal Reservoir Technology  
CONTROLLED AND TARGETED ELUTION



Amphilimus™ formulation: Sirolimus + Fatty Acid



MAXIMIZED EFFICACY



Bio Inducer Surface coating



OPTIMAL HEMOCOMPATIBILITY  
VS LUMEN BLOOD FLOW